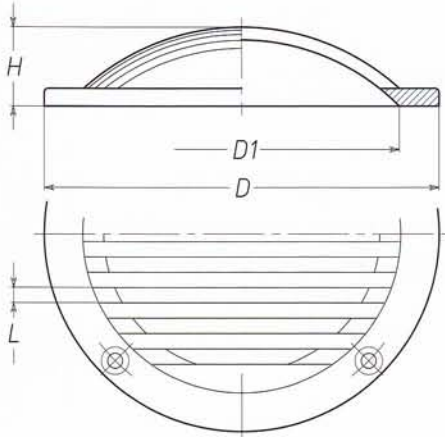


Art. 1116

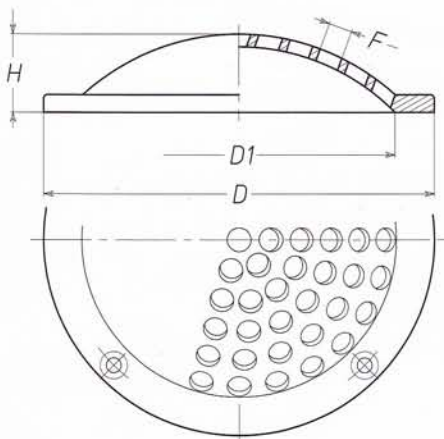
**CUFFIA TONDA FRESATA - OTTONE**  
SLOTTED - ROUND SCOOP - BRASS



Weight (gr)	70	145	285	380	550
H	10	15	21	27	35
L	4	4	4	4	4
D1	33	54	73	96	121
D	60	80	100	120	150

Art. 1117

**CUFFIA TONDA FORATA - OTTONE**  
DRILLED - ROUND SCOOP - BRASS



Weight (gr)	65	155	280	390	625
H	10	15	21	27	35
F	5	6	6	7	7
D1	33	54	73	96	121
D	60	80	100	120	150