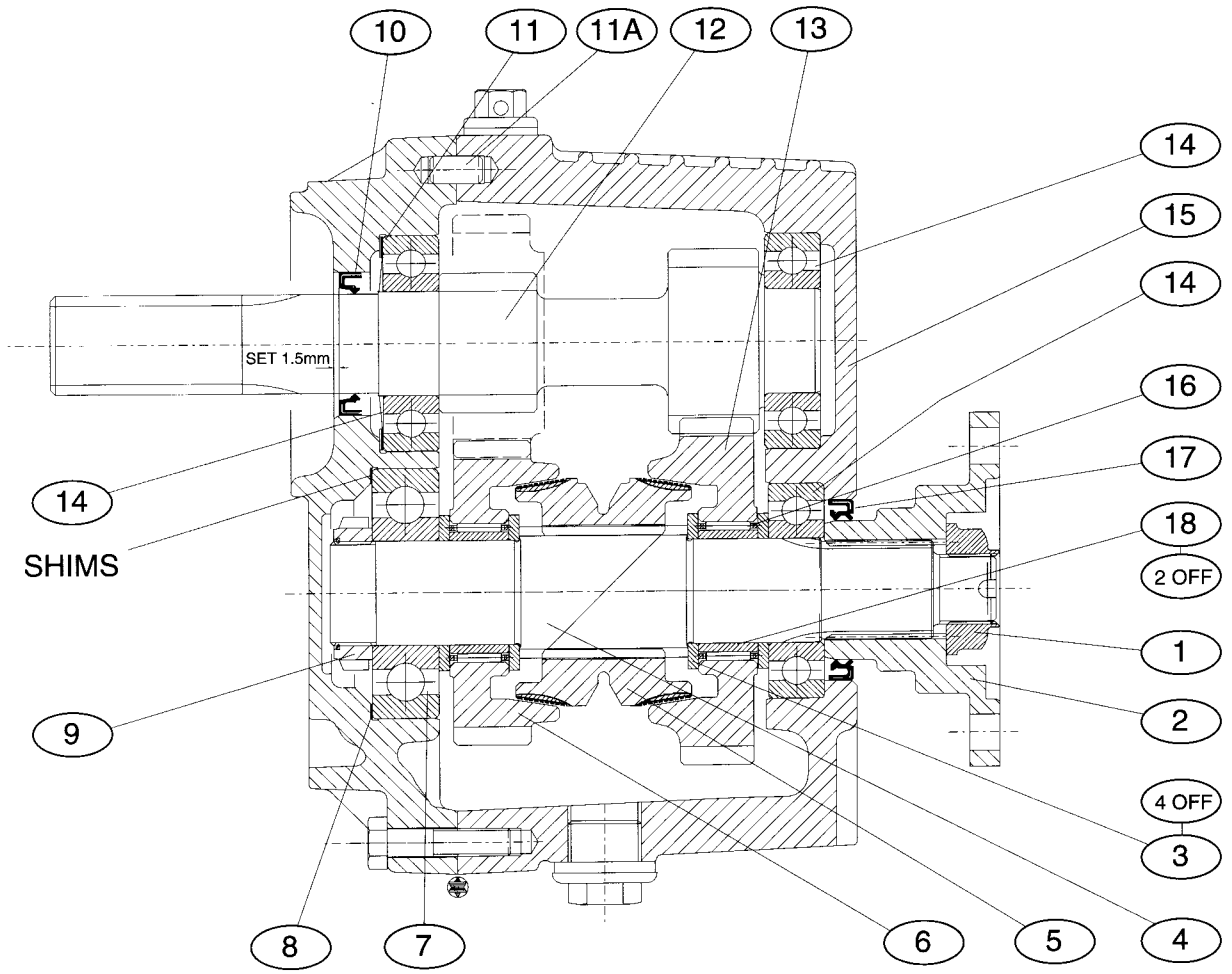


ITEM NO.	DESCRIPTION	PART NO.	QTY
1	Locknut M20x1.5	MT8095	1
2	Drive Flange	MT8099	1
3	Thrust washer	0593003	4
4	Output shaft	MT8206	1
5	Cone clutch	MT8098	1
6	Output reverse gear 2.5:1 ratio	MT8205	1
7	Bearing	CM2068	1
8*	Shim 0.05, Shim 0.25, Shim 0.075 mm	MT1077/02/10/31	As required
9	Locknut M30 x 1.5	CP1413	1
10***	Oil seal	0400286	1
11	Waved Washer	0191248	1
11a	Dowel	0210815	2
12	Input shaft 2:1 ratio	MT8199	1
	Input shaft 2.5:1 ratio	MT8200	1
13	Output forward gear 2:1 ratio	MT8203	1
	Output forward gear 2.5:1 ratio	MT8204	1
14	Bearing	40M149	3
15	Gearcase	MT8198	1
16	Needle Bearing	0563502	2
17***	Oil seal	0400407	1
18	Inner ring	0583001	2

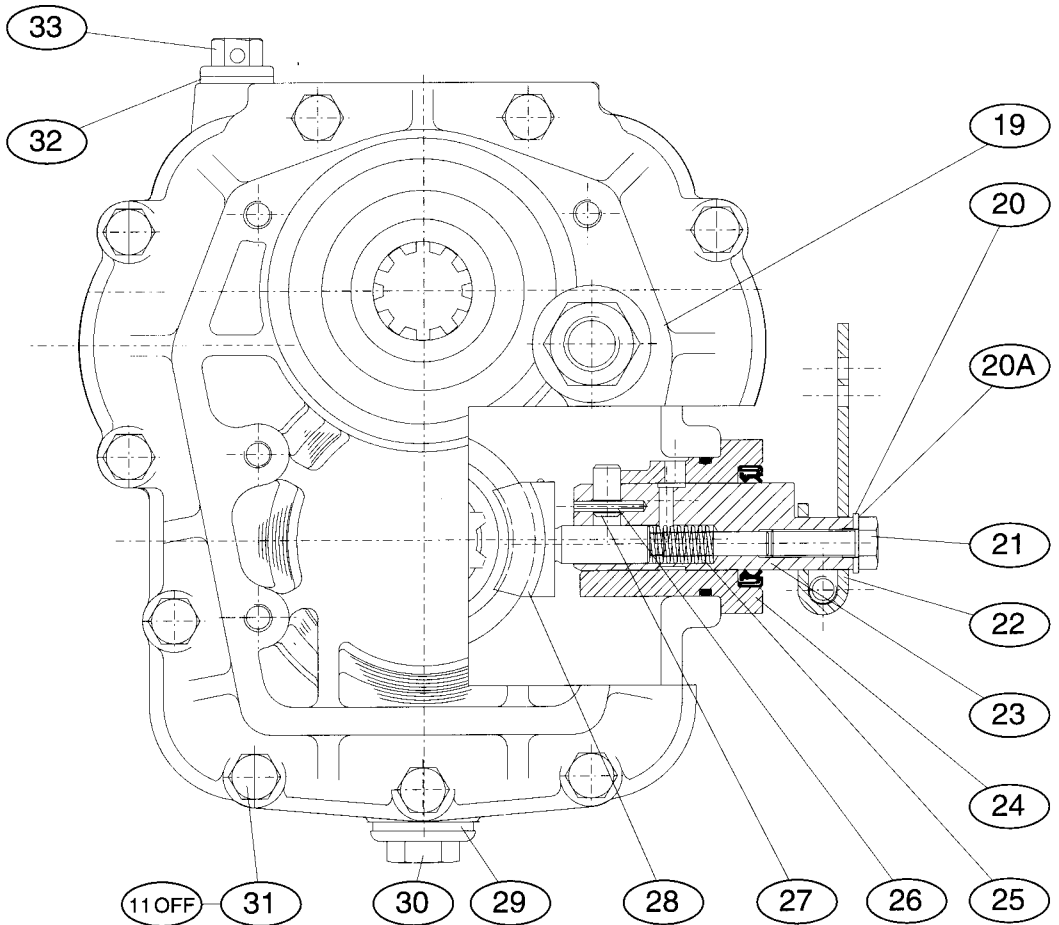
\* Contained in shimming kit MT0068

\*\*\* Contained in Oil Seal 'O' Ring Kit MT0428



ITEM NO.	DESCRIPTION	PART NO.	QTY
19	Front cover	MT8197	1
20	Washer M8	0191007ZP	1
20A**	Shim 0.125, Shim 0.25, Shim 0.50mm	057017B/C/D	As required
21	Bolt M8 x 26	MT8117	1
22	Gear selector lever	MT8100	1
23	Selector control body	MT8102	1
24	Selector Housing	MT8101	1
25	Spring	0311042	1
26	Spring dowel	010-0210	1
27	Selector pin	MT8104	1
28	Selector shoe	MT8103	1
29	Bonded seal 1/2" BSP	0201714	1
30	Magnetic drain plug	CP1331	1
31	Bolt M8 x 35	0040810ZP	11
32	Bonded seal	CP1204	1
33	Dipstick/Breather	MT8255S/A	1

\*\* Selector shim kit containing 3 off each shim MT0430



ITEM NO.	DESCRIPTION	PART NO.	QTY
35	Stud M8 x 37	MT3094	2
36***	'O' ring	04303524	1
37	Nut nyloc M8	0050806ZP	3
38***	Oil seal	0400255	1
39	Bolt M8 x 35	0040810ZP	1
40	Plain washer	0191007ZP	1
41	Binx nut M16	0051610	1
42***	'O' ring	04301416	1
43	Bearing	0511710	2
44	Idler gear	MT8202	1
45	Internal circlip	0250350	1
46	Idler shaft	MT8201	1

\*\*\* Contained in 'O' ring/oil seal kit MT0428

