

## 200 Series

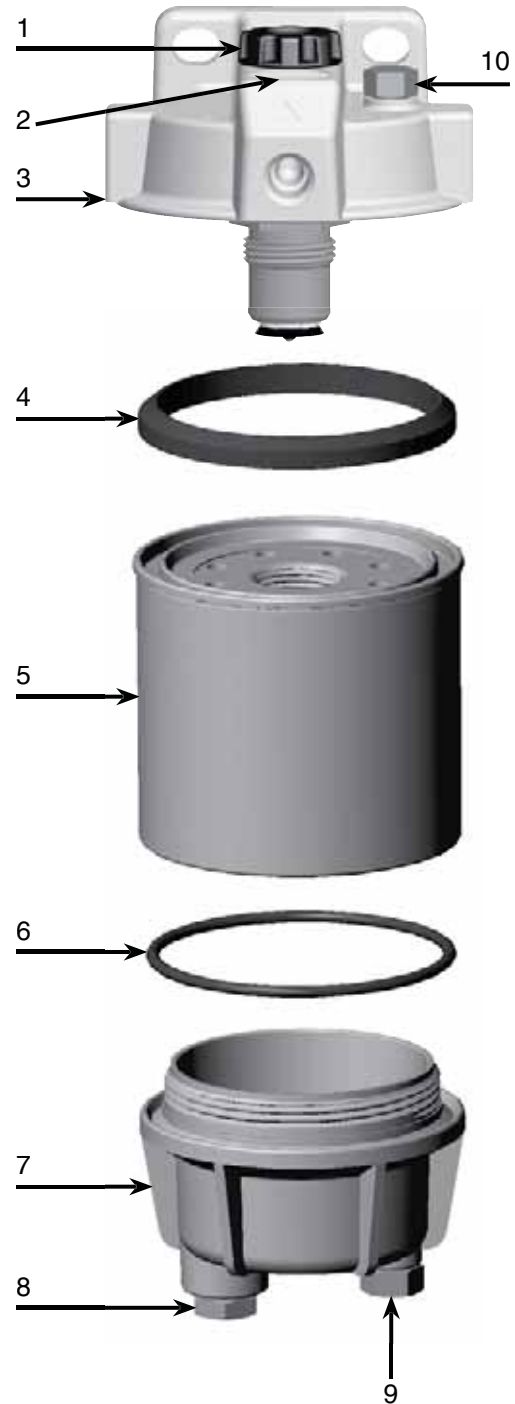
### Replacement Parts

#### 215RMAM, 230RMAM and 245RMAM

Part No.	Description
1. <b>RK20025-01</b>	Primer Pump Kit
2. <b>RK20011-01</b> <b>RK 20742</b>	Checkball Kit with Plastic Cap Metal Cap Kit
3. <b>RK20046-01</b>	Head Kit (1/4" NPTF Ports) (includes #'s 1-4)
4. <b>RK 22061</b>	Gasket Kit
5. Replacement Elements (includes #'s 4 and 6) <b>R15TUL</b> <b>R20TUL</b> <b>R25TUL</b>	10 Micron (UL Recognized) 10 Micron (UL Recognized) 10 Micron (UL Recognized)
6. <b>RK 22244</b>	Bowl O-ring Kit
7. <b>RK 22368</b>	Metal Bowl Kit (includes #'s 6, 8 and 9) (3/8" NPT drain Plug) (1/2"-20 probe port)
8. <b>918-N6</b>	Steel Plug (3/8" NPT)
9. <b>RK 20022</b>	Metal Plug Kit (1/2"-20 UNF)
10. <b>RK 10110</b>	Metal Vent Plug Kit (3/8"-16 UNF)

#### Additional Parts (not shown)

<b>RK20075-01</b>	Complete Seal Service Kit
<b>RK 12041</b>	Port Plug Kit (1/4" NPT)
<b>22360</b>	Installation Instructions



# Hand Primer Pump Upgrade



## Benefits

- Up to 37% increase in volume of fuel pumped per stroke
- Improved strength and alignment
- Improved ease of operation
- Reduced restriction in fuel flow
- Changeable in the field

This enhancement is possible by increasing the stroke length, by about 1/2", on the pump shaft and the element threaded adapter. Additionally, the knob and support ring have been redesigned to be more robust.

This change also affects replacement kits for the primer pump and head assemblies. The new style primer pump requires an additional 0.5 inch of space above the assembly (2 inches total) to utilize the added length of stroke; however, the primer pump will perform as always without any mounting modifications.

The new easy-grasp pump knob is larger than current knobs and the color will be changed from white to black to make a clear visual change between current pumps and newer versions.

