

# FBO Filter Assembly



**FBO-10**



**FBO-14**



**FBO-14-HTR**

Racors FBO-10 and FBO-14 filter assemblies are designed to meet the toughest hydrocarbon refueling conditions and provide for ease of filter change outs. The FBO Assembly can flow 25 gpm (95 lpm) or up to 75 gpm (230 lpm) depending on the model, the elements installed and fuel being filtered. The FBO assembly can be used on mobile refuelers or installed in refueling cabinets. The unit can also be used for diesel fuel dispensing pumps or as a primary fuel filter/water separator for large diesel engines. The assembly features a locking ring

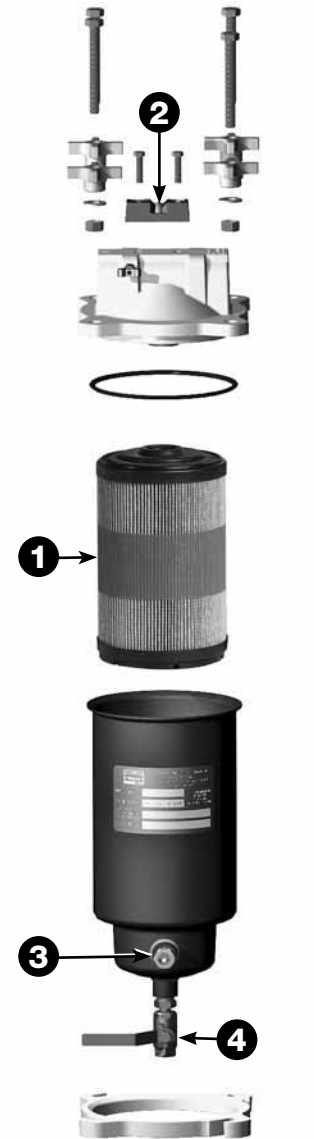
collar, which attaches the filter housing to the aluminum die-cast filter head with four bolts. The slotted locking ring collar allows maintenance personnel to hand-loosen the four collar bolts, rotate and lower the bowl assembly for element change outs. With new element installed, simply raise the bowl and rotate into position on the locking ring and hand tighten evenly. The closure hardware consists of stainless steel nuts, bolts and washers with metal hand knobs for ease of maintenance – one person can easily change the filter element. No wrenches or other special tools are required.

### Applications:

- Jet fuel, aviation gas, diesel fuel, gasoline, kerosene, JP4, JP5 and JP8.
- Aviation fuel trucks.
- Aviation fueling cabinets.
- Diesel fuel dispensing system.
- Marine fuel docks.
- Fuel systems on large diesel engines.

## FBO Assemblies

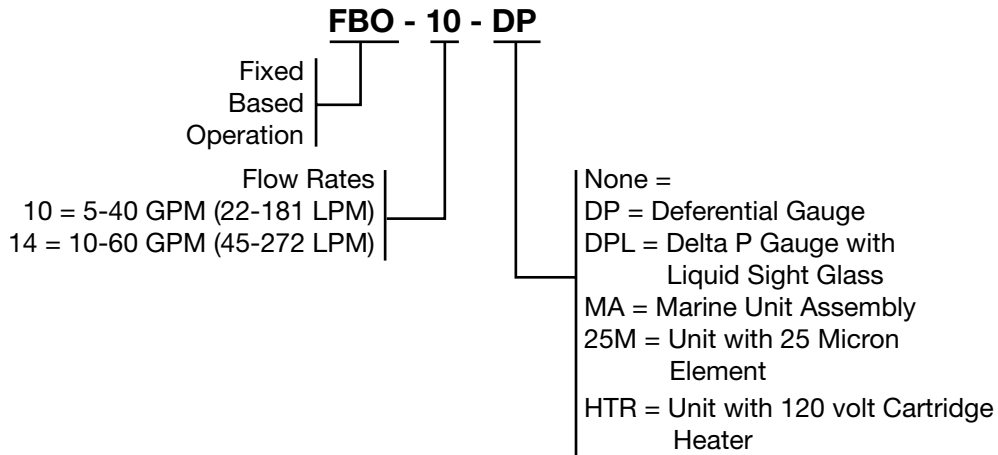
### How to Order



Below is a guide to help customers order the right FBO assembly with the accessories you need.

Assembly	1 Element	2 Delta P Gauge	3 Sight Glass	4 Drain Valve
FBO-10	Order Separately			X
FBO-10-DP	Order Separately	X		X
FBO-10-DPL	Order Separately	X	X	X
FBO-10-25M	FBO-60332	X	X	X
FBO-14	Order Separately			X
FBO-14-DP	Order Separately	X		X
FBO-14-DPL	Order Separately	X	X	X
FBO-14-25M	FBO-60341	X	X	X
FBO-14-HTR	Order Separately	X	X	X

### How to Order



### Performance

<b>FBO-10</b>	Maximum Flow Rates				Clean Dry	Change
	Flow Range	Diesel	Jet Fuel	Gasoline	Delta P	Delta P
<b>Prefilter</b>	5-40 GPM (18.9-151.4 LPM)	20 GPM (75.7 LPM)	40 GPM (151.4 LPM)	50 GPM (189.3 LPM)	Varies w/fluid and flow rate.	20 PSID
<b>Filter Sep</b>	5-35 GPM (18.9-132.5 LPM)	18 GPM (68.1 LPM)	35 GPM (132.5 LPM)	45 GPM (170.3 LPM)	Varies w/fluid and flow rate.	15 PSID
<b>Absorber</b>	5-25 GPM (18.9-94.6 LPM)	18 GPM (68.1 LPM)	35 GPM (132.5 LPM)	45 GPM (170.3 LPM)	Varies w/fluid and flow rate.	30 PSID
<b>FBO-14</b>	Flow Range	Diesel	Jet Fuel	Gasoline	Delta P	Delta P
<b>Prefilter</b>	10-60 GPM (37.9-227.1 LPM)	30 GPM (113.6 LPM)	60 GPM (227.1 LPM)	75 GPM (283.9 LPM)	Varies w/fluid and flow rate.	20 PSID
<b>Filter Sep</b>	10-50 GPM (37.9-189.3 LPM)	25 GPM (94.6 LPM)	50 GPM (189.3 LPM)	65 GPM (246.1 LPM)	Varies w/fluid and flow rate.	15 PSID
<b>Absorber</b>	10-37 GPM (37.9-140.1 LPM)	26 GPM (98.4 LPM)	55 GPM (208.2 LPM)	70 GPM (265.0 LPM)	Varies w/fluid and flow rate.	30 PSID

## FBO Assemblies

### Replacement Filters

Filters are used to protect the OEM supplied fuel system.

#### Water Separator

Water separator filters remove water and contaminants from hydrocarbon fuel streams and are the most popular filters.

#### Silicone Treated

Silicone treated fuel filters remove particle contaminants down to one micron.

Silicone filters can also be used upstream, before a fuel filter/water separator, to extend filter life.



#### Water Absorber

Water absorber filters absorb water and filter out contaminants from diesel fuel and other hydrocarbon streams.

## FBO-10 (6x10 in. Elements)

Micron Rating	Water Separator	Silicone Treated	Water Absorber
1	FBO 60327 FBO 60360 <sup>2</sup>	FBO 60330	FBO 60333
5	FBO 60328	FBO 60331	FBO 60334
10	FBO 60353	FBO 60354	FBO 60355
25	FBO 60329	FBO 60332	FBO 60335



## FBO-14 (6x14 in. Elements)

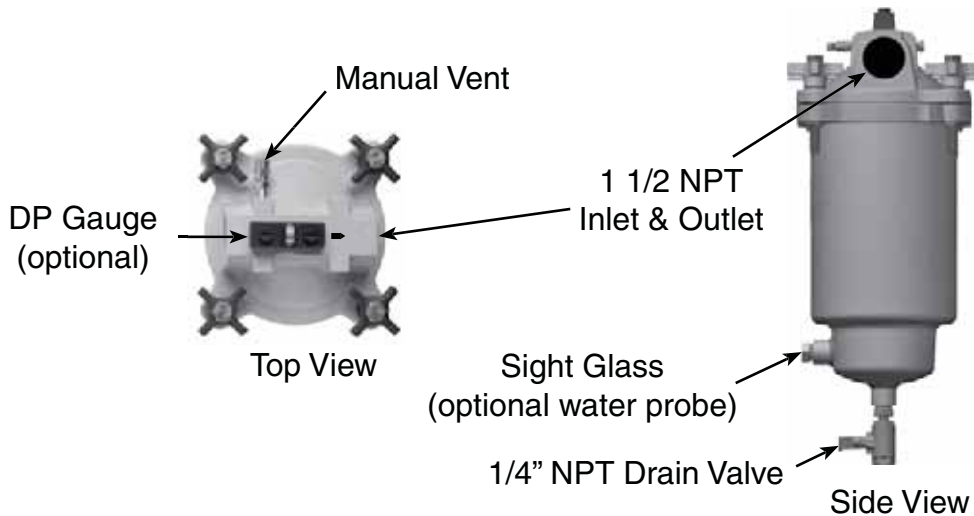
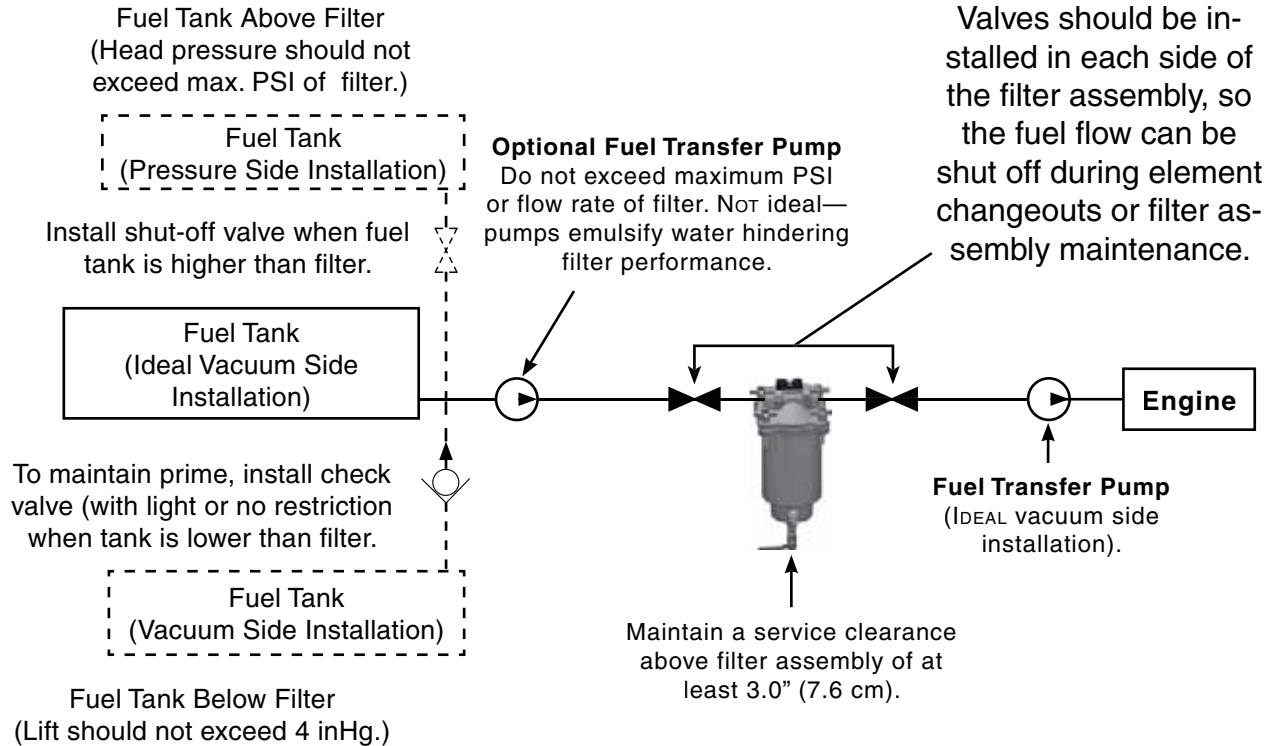
Micron Rating	Water Separator	Silicone Treated	Water Absorber
1	FBO 60336 FBO 60361 <sup>2</sup>	FBO 60339	FBO 60342
5	FBO 60337	FBO 60340	FBO 60343
10	FBO 60356	FBO 60357	FBO 60358
25	FBO 60338	FBO 60341	FBO 60344



<sup>1</sup> 72951 Monitor Adapter Plate enables the FBO-14 to take five RMO-210-4 monitor filters.

<sup>2</sup> API/EI 1583 5th Edition filters are certified for jet fuel applications.

### Mounting Information



E

## FBO Assemblies

### Replacement Parts

#### FBO-10 and FBO-14

	Part Number	Description
1.	72712	Handle Assembly
2.	<b>Differential Pressure Gauge (DP Gauge)</b> 72694 72783	15 PSI Gauge Kit 30 PSI Gauge Kit
3.	<b>FBO Head Kits</b> 72531	Head Kit with DP Gauge
4.	OV-13	O-ring kit
5.	72806  73166	FBO-10 Housing Assembly (includes #'s 5 & 8). FBO-14 Housing Assembly (includes #'s 5 & 8).
6.	72710 72349	1/2 " NPT Sight Glass Steel Water Sensor Adapter Female: 1/2 "-20 SAE Male: 1/2 "-14 NPT, length is 1 "
7.	71943-.25	1/4 " NPT Ball Valve
8.	72532  7581	Flange  Installation Instructions

#### Optional Parts (not shown)

73231	1/2" DIA. 120 volt Cartridge Heater
73249	Optional Water Probe Bushing



(optional) WIF Probe  
RK 30880

1 1/2" NPT Inlet  
and Outlet Ports



FBO Head

